

\$47,800 - 6 Twp Rd 460, Rural Wetaskiwin County

MLS® #E4444124

\$47,800

0 Bedroom, 0.00 Bathroom,
Rural on 0.14 Acres

Summerhaven, Rural Wetaskiwin County, AB

Vacant lot in Summer Haven subdivision near Bear Lake. Convenient access to the Queen E 2 Highway, and a short drive to Wetaskiwin, Leduc, or Pigeon Lake. Ideal for RV enthusiasts or as a future building site. Uncover the potential at this incredibly affordable price.

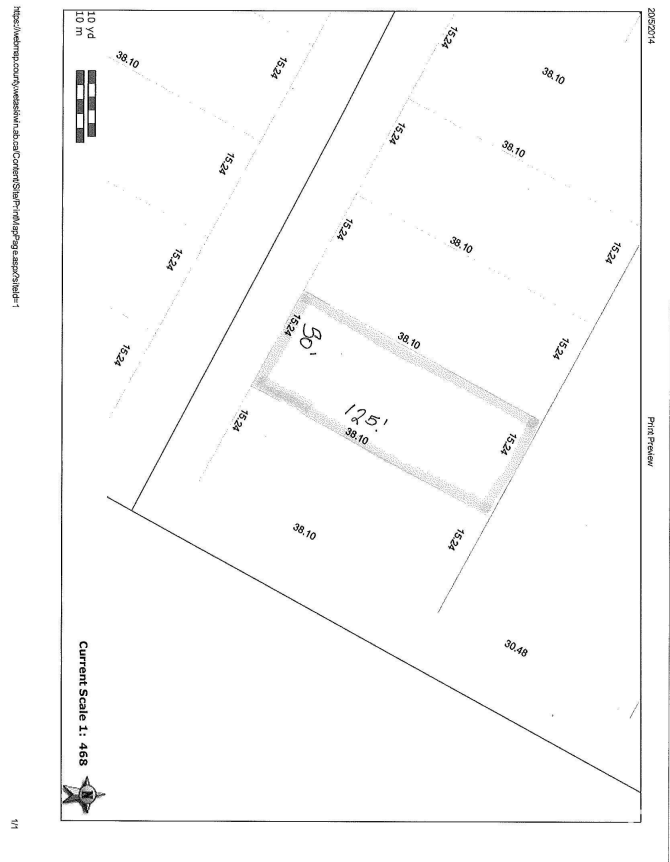
Essential Information

MLS® #	E4444124
Price	\$47,800
Bathrooms	0.00
Acres	0.14
Type	Rural
Sub-Type	Vacant Lot/Land
Status	Active

Community Information

Address	6 Twp Rd 460
Area	Rural Wetaskiwin County
Subdivision	Summerhaven
City	Rural Wetaskiwin County
County	ALBERTA
Province	AB
Postal Code	T0C 1H0

Exterior



Exterior Features Not Landscaped

Additional Information

Date Listed June 24th, 2025
Days on Market 26
Zoning Zone 80

DATA IS DEEMED RELIABLE BUT IS NOT GUARANTEED ACCURATE BY THE REALTORS® ASSOCIATION OF EDMONTON. COPYRIGHT 2025 BY THE REALTORS® ASSOCIATION OF EDMONTON. ALL RIGHTS RESERVED.Trademarks are owned or controlled by the Canadian Real Estate Association (CREA) and identify real estate professionals who are members of CREA (REALTOR®, REALTORS®) and/or the quality of services they provide (MLS®, Multiple Listing Service®)
Listing information last updated on July 20th, 2025 at 12:17am MDT