

Courtesy Of David Lofthaug Of Bode

\$733,301 - 1544 Grant Way, Edmonton

MLS® #E4446375

\$733,301

5 Bedroom, 4.00 Bathroom, 2,234 sqft

Single Family on 0.00 Acres

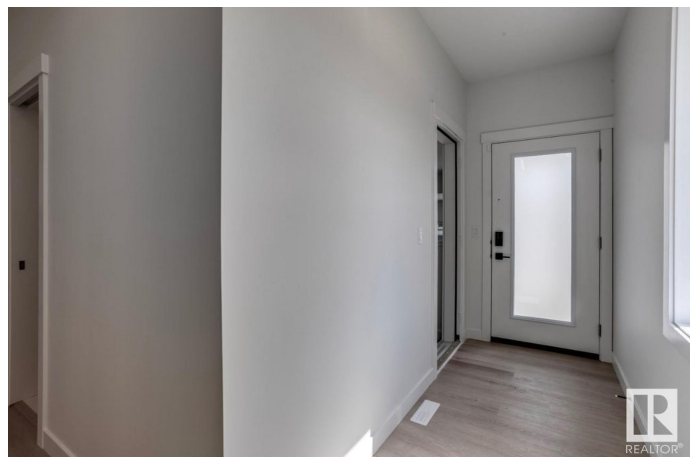
Glastonbury, Edmonton, AB

This stunning home boasts a beautiful Prairie Elevation and a separate side entrance leading to a spacious basement with 9' ceilings. The main floor features a fifth bedroom and a full bathroom, perfect for guests. Enjoy an elevated cooking experience with a standard spice kitchen and a generous dining nook ideal for family gatherings. The kitchen also includes a substantial island with a flush eating bar. The Great Room is enhanced by a 60' electric fireplace, creating a cozy ambiance. Upstairs, you'll find a convenient second-floor laundry, along with a luxurious 5-piece primary ensuite, complete with dual vanities, a freestanding soaker tub and separate glass shower. Bedroom #2 also has its own ensuite, ensuring comfort and privacy. This home is designed for both convenience and luxury, offering the perfect blend of style and function. Photos are representative.

Built in 2025

Essential Information

MLS® #	E4446375
Price	\$733,301
Bedrooms	5
Bathrooms	4.00
Full Baths	4



Square Footage	2,234
Acres	0.00
Year Built	2025
Type	Single Family
Sub-Type	Detached Single Family
Style	2 Storey
Status	Active

Community Information

Address	1544 Grant Way
Area	Edmonton
Subdivision	Glastonbury
City	Edmonton
County	ALBERTA
Province	AB
Postal Code	T5T 0W2

Amenities

Amenities	No Animal Home, No Smoking Home, See Remarks
Parking Spaces	4
Parking	Double Garage Attached

Interior

Interior Features	ensuite bathroom
Appliances	Hood Fan, Oven-Microwave
Heating	Forced Air-1, Natural Gas
Fireplace	Yes
Fireplaces	Insert
Stories	2
Has Basement	Yes
Basement	Full, Unfinished

Exterior

Exterior	Wood, Vinyl
Exterior Features	Corner Lot, Park/Reserve, Playground Nearby, Schools, Shopping Nearby
Roof	Asphalt Shingles
Construction	Wood, Vinyl
Foundation	Concrete Perimeter

Additional Information

Date Listed	July 7th, 2025
Days on Market	20
Zoning	Zone 58
HOA Fees	126
HOA Fees Freq.	Annually

DATA IS DEEMED RELIABLE BUT IS NOT GUARANTEED ACCURATE BY THE REALTORS® ASSOCIATION OF EDMONTON. COPYRIGHT 2025 BY THE REALTORS® ASSOCIATION OF EDMONTON. ALL RIGHTS RESERVED.Trademarks are owned or controlled by the Canadian Real Estate Association (CREA) and identify real estate professionals who are members of CREA (REALTOR®, REALTORS®) and/or the quality of services they provide (MLS®, Multiple Listing Service®)

Listing information last updated on July 27th, 2025 at 3:32pm MDT