

\$159,900 - 307 32 Alpine Place, St. Albert

MLS® #E4447221

\$159,900

2 Bedroom, 1.00 Bathroom, 851 sqft

Condo / Townhouse on 0.00 Acres

Akinsdale, St. Albert, AB

Top-Floor 2-Bedroom Condo, Stylish, Spacious & Move-In Ready! Beautifully updated condo boasting 850 sq ft of smartly designed living space, offering peace, privacy, and plenty of natural light. Step into a warm and inviting living area centered around a cozy gas fireplace, set against a feature wall. The kitchen is a chef's delight with granite countertops, stained cabinets, and a layout perfect for entertaining. Enjoy the convenience of in-suite laundry with your own washer and dryer. As well as newer doors, furnace, and bathroom updates that give this home a fresh, move-in-ready feel. The primary bedroom offers a spacious walk-in closet, providing plenty of storage. Located in a prime area, this condo offers 2 outdoor parking stalls, is walking distance to a K-9 school, pickleball courts, and close to public transit—making daily commutes and weekend activities a breeze! Whether you're a first-time buyer, downsizer, or investor, this condo offers the ideal blend of comfort and style.

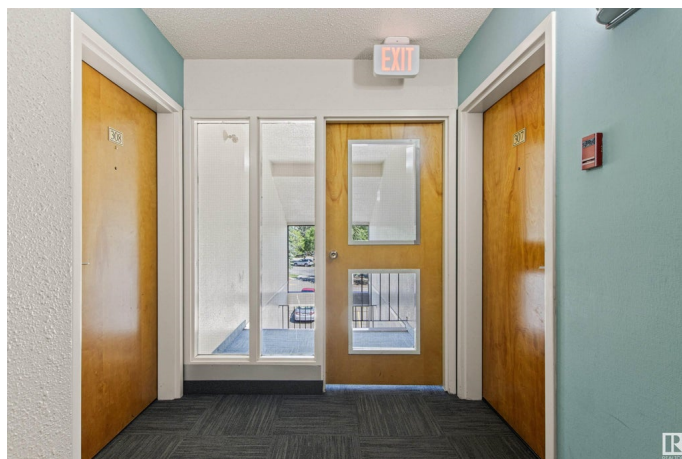
Built in 1982

Essential Information

MLS® # E4447221

Price \$159,900

Bedrooms 2



Bathrooms	1.00
Full Baths	1
Square Footage	851
Acres	0.00
Year Built	1982
Type	Condo / Townhouse
Sub-Type	Lowrise Apartment
Style	Single Level Apartment
Status	Active

Community Information

Address	307 32 Alpine Place
Area	St. Albert
Subdivision	Akinsdale
City	St. Albert
County	ALBERTA
Province	AB
Postal Code	T8N 3Y2

Amenities

Amenities	Off Street Parking, On Street Parking, Deck, Intercom, Parking-Visitor, Storage-In-Suite
Parking	2 Outdoor Stalls

Interior

Appliances	Dishwasher-Built-In, Dryer, Hood Fan, Refrigerator, Stove-Electric, Washer, TV Wall Mount
Heating	Forced Air-1, Natural Gas
Fireplace	Yes
Fireplaces	Insert
# of Stories	3
Stories	1
Has Basement	Yes
Basement	None, No Basement

Exterior

Exterior	Wood, Vinyl
Exterior Features	Playground Nearby, Public Transportation, Schools, Shopping Nearby
Roof	Asphalt Shingles

Construction	Wood, Vinyl
Foundation	Concrete Perimeter

School Information

Elementary	Elmer S Gish
Middle	Elmer S Gish
High	Paul Kane

Additional Information

Date Listed	July 11th, 2025
Days on Market	16
Zoning	Zone 24
Condo Fee	\$497

DATA IS DEEMED RELIABLE BUT IS NOT GUARANTEED ACCURATE BY THE REALTORS® ASSOCIATION OF EDMONTON. COPYRIGHT 2025 BY THE REALTORS® ASSOCIATION OF EDMONTON. ALL RIGHTS RESERVED.Trademarks are owned or controlled by the Canadian Real Estate Association (CREA) and identify real estate professionals who are members of CREA (REALTOR®, REALTORS®) and/or the quality of services they provide (MLS®, Multiple Listing Service®)

Listing information last updated on July 26th, 2025 at 9:47pm MDT